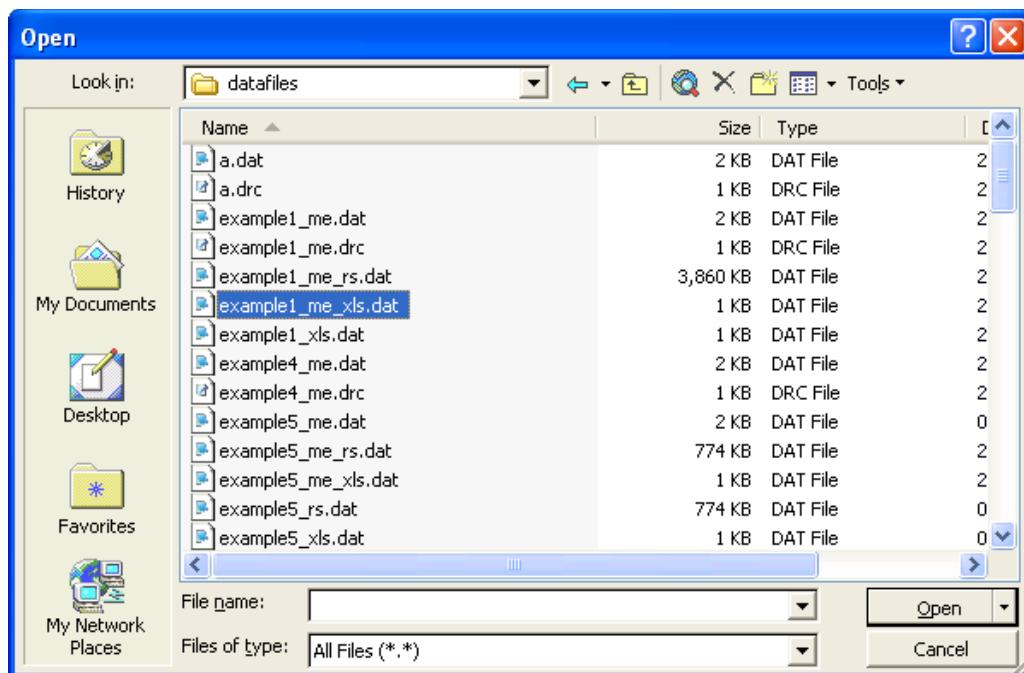


## APPENDIX

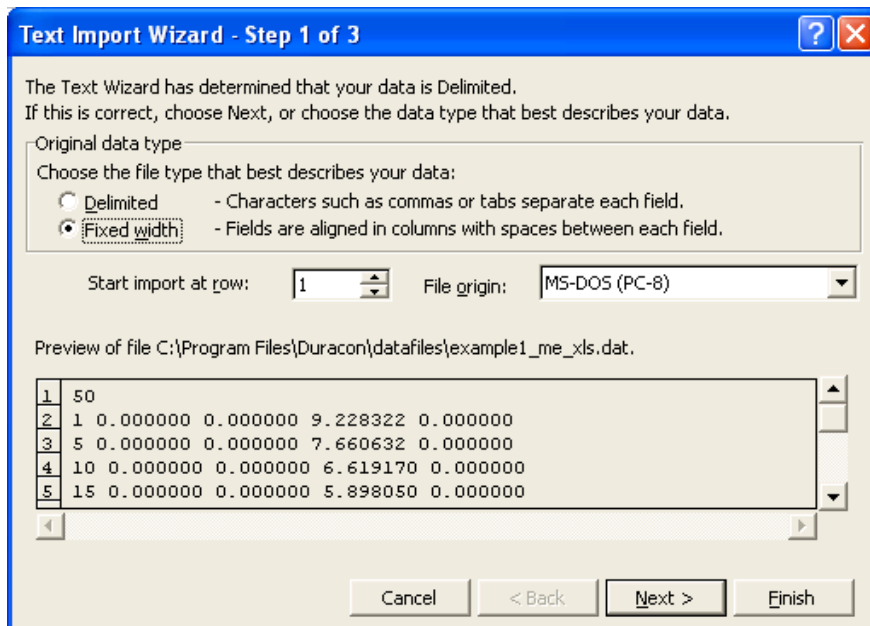
### CONVERSION OF DATA FILES INTO NEW GRAPHS BY USE OF MS EXCEL

As shown in the Software Manual, the final results of the durability analysis are always displayed in the form of a single graph. In order to obtain a better basis for comparison of the graphs from several analyses, it may be convenient to show all the graphs together in the same figure. This can be done by converting all the data files from DURACON into new graphs by use of MS Excel as described in the following.

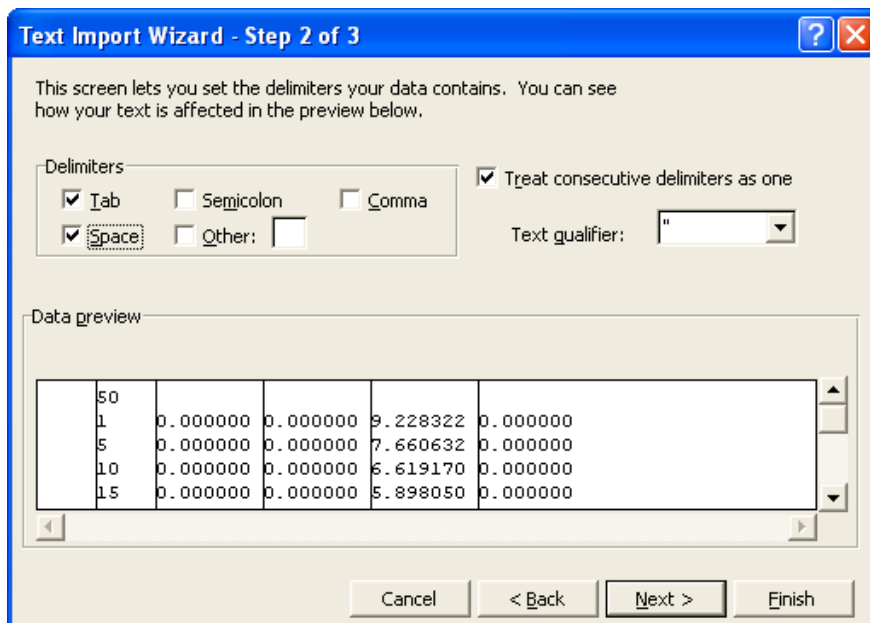
1. In MS Excel, open a file and set the file type to *All Files (\*.\*)*



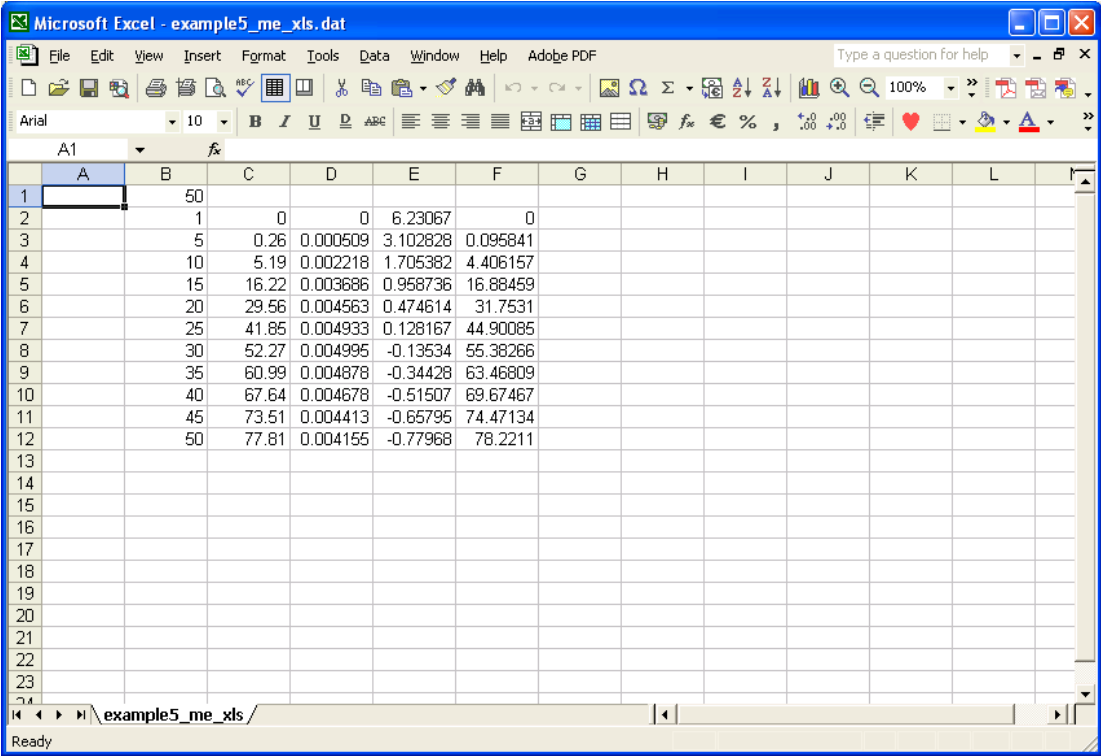
2. Select the output data file with the extension *\*.xls.dat*, and open it.
3. The *Text Import Wizard* opens up because the file is not a generic MS Excel file. Chooses *Delimited*, and press *Next*.



4. Activate the *Space* option in *Delimiters* and press *Finished*.

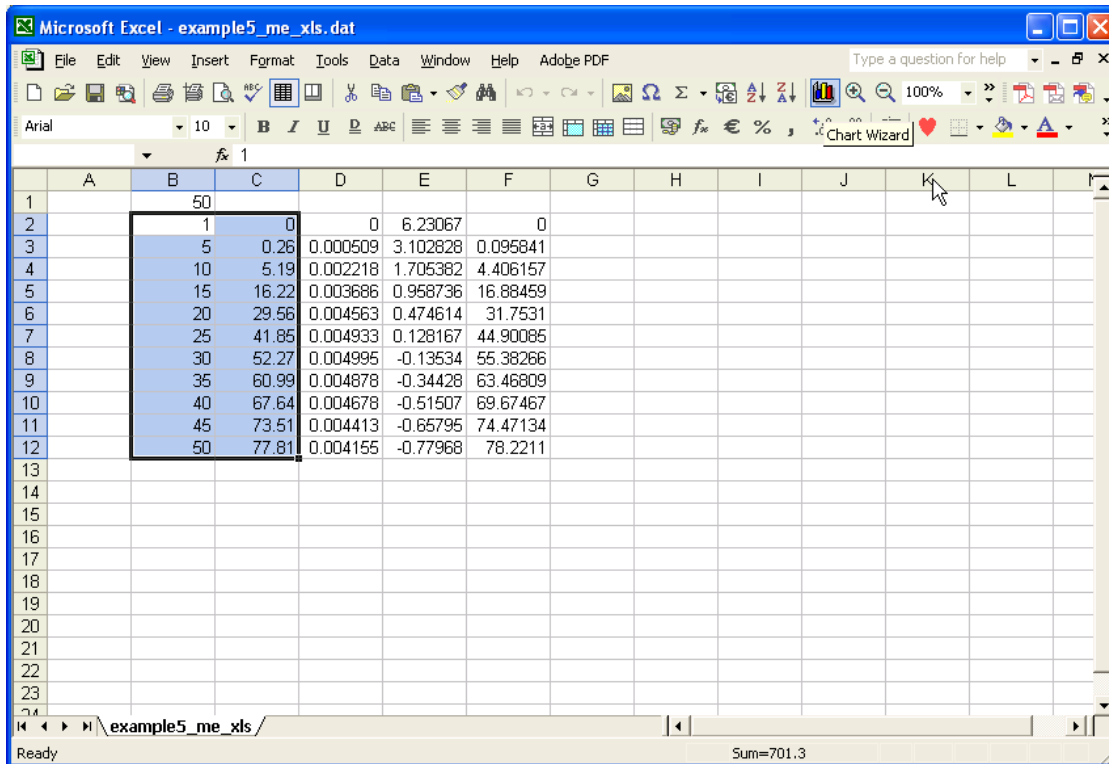


5. The output data file is then converted into MS Excel.

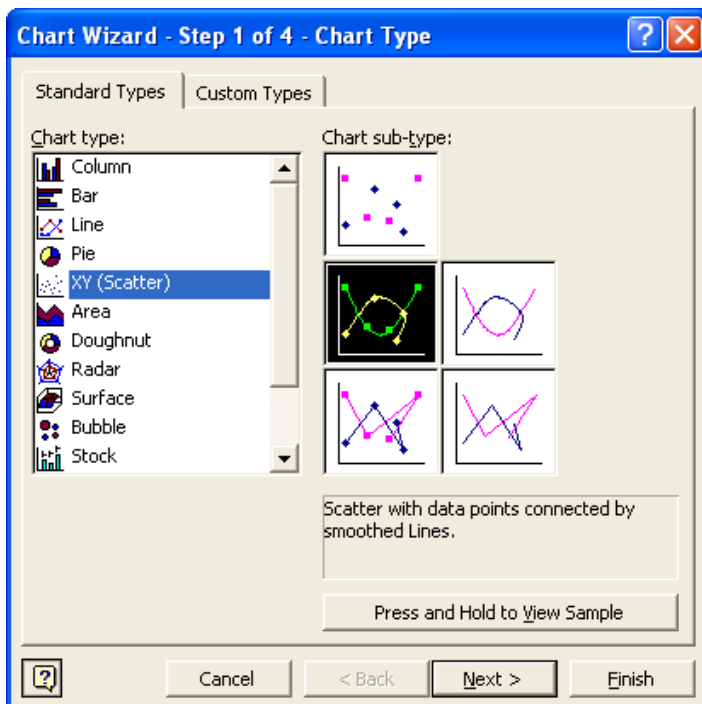


6. In the first line, the time frame for the simulation is shown. The columns of data are from left to right: Time (years), Probability of Failure (%), Standard Error, Reliability Index, Probability of Failure calculated with Reliability Index (%).

7. Chose the columns of data to place into a graph and activate the *Chart Wizard*.



8. Select *XY (Scatter)* and the *Scatter with data points connected by smoothed lines* option. Then press *Finish*.



9. The graph can now be edited and more data added to it.

